



www.fuhr-gmbh.com



info@fuhr-gmbh.com

# acuraControl

## Intelligent Filter Management

The Intelligent Filter Management Unit **acuraControl** was developed as a consistent further development of our proven **DFA** and is to actively support the user in the filtration. In the **basic version** the system displays the **pressure**, the **differential pressure** and the **temperature**. As an **extension**, the device can also evaluate the **flow**, the **flow volume** and a **particle counter**.

All **acuraLine** filter housings and filter inserts are pre-programmed and selectable. Likewise, external filters can be created using a user-defined program. The **smartGuide** interactively supports detailed statistics, short instructions, status messages and helps to avoid disruptions and production losses.

**acuraControl** can also evaluate, control and secure complex filter units. The device can communicate autonomously or in combination with a PLC or other IP-based device. Via the **html state site**, the device can be used in Intranet, e.g. in a monitoring room.

Remote maintenance via VPN tunnel is also possible.

### TECHNICAL DATA

acuraControl

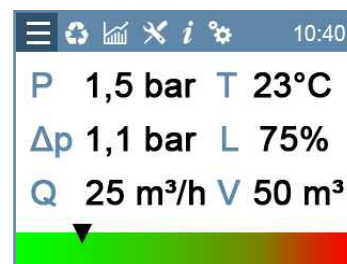
Supply voltage	100V-240V AC 50/60Hz (max. 10W)
Analog Input	2x 4-20mA power input for <b>pressure indicators</b> - includes power supply for external modules - 12VDC-Supply short circuit protected (completely switch off) - Internal resistor 10 Ω 1x <b>Temperature indicator</b> KTY81/110
Digital Input / output	1x 100MBit Ethernet connection - for service and maintenance - signal monitor with http-server - optional SPS connection (ModbusTCP)
Display	TFT-display 320x240 px
IP safety class	IP65
Housing material / holder	Polycarbonate / Stainless Steel
Ambient temperature	-10/+40°C
Dimensions	160 x 142 x 100 mm
Part number	9890011025

Subject to technical alterations.  
AL1102-02-E

acuraLine®



Main screen



smartGuide



Websupport



Admission / certificates

Product standard:  
EN 61326-1:2013  
EMV product group:  
EN 61326-1 labor / control techn.

CE RoHS